

# JVC

# SCHEMATIC DIAGRAMS

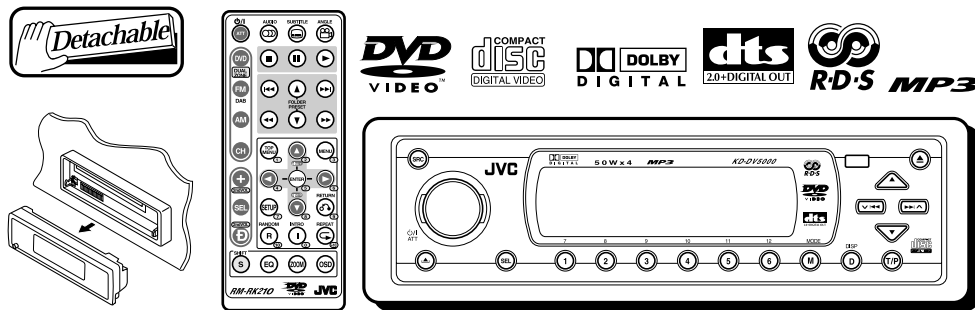
## DVD/CD RECEIVER

# KD-DV5000

CD-ROM No.SML200308

Area Suffix


E ----- Continental Europe



## Contents

Block diagram .....	2-1
Standard schematic diagrams .....	2-3 to 6
Printed circuit boards .....	2-7 to 9

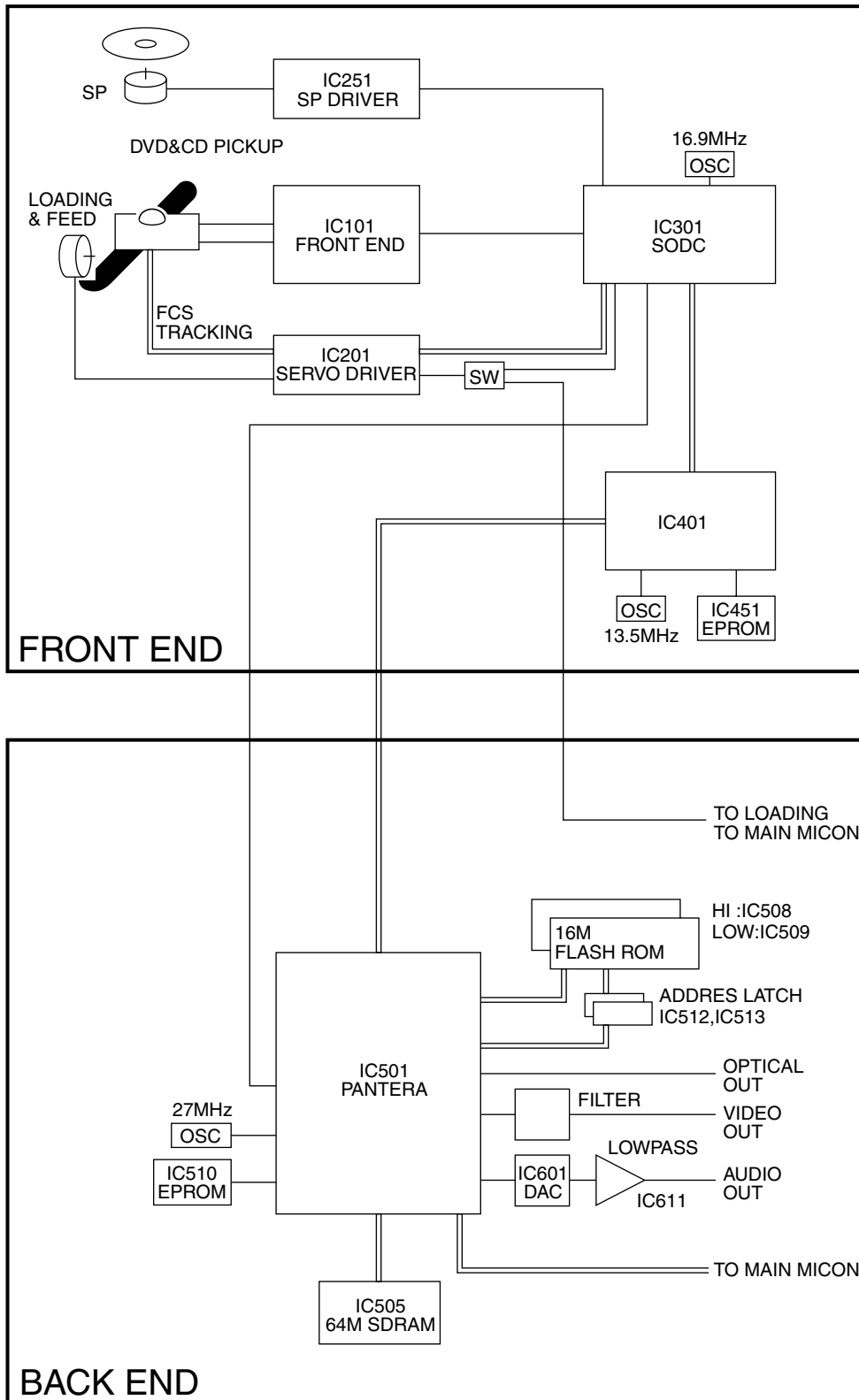
# Safety precaution

 **CAUTION** Burrs formed during molding may be left over on some parts of the chassis. Therefore, pay attention to such burrs in the case of performing repair of this system.

 **CAUTION** Please use enough caution not to see the beam directly or touch it in case of an adjustment or operation check.

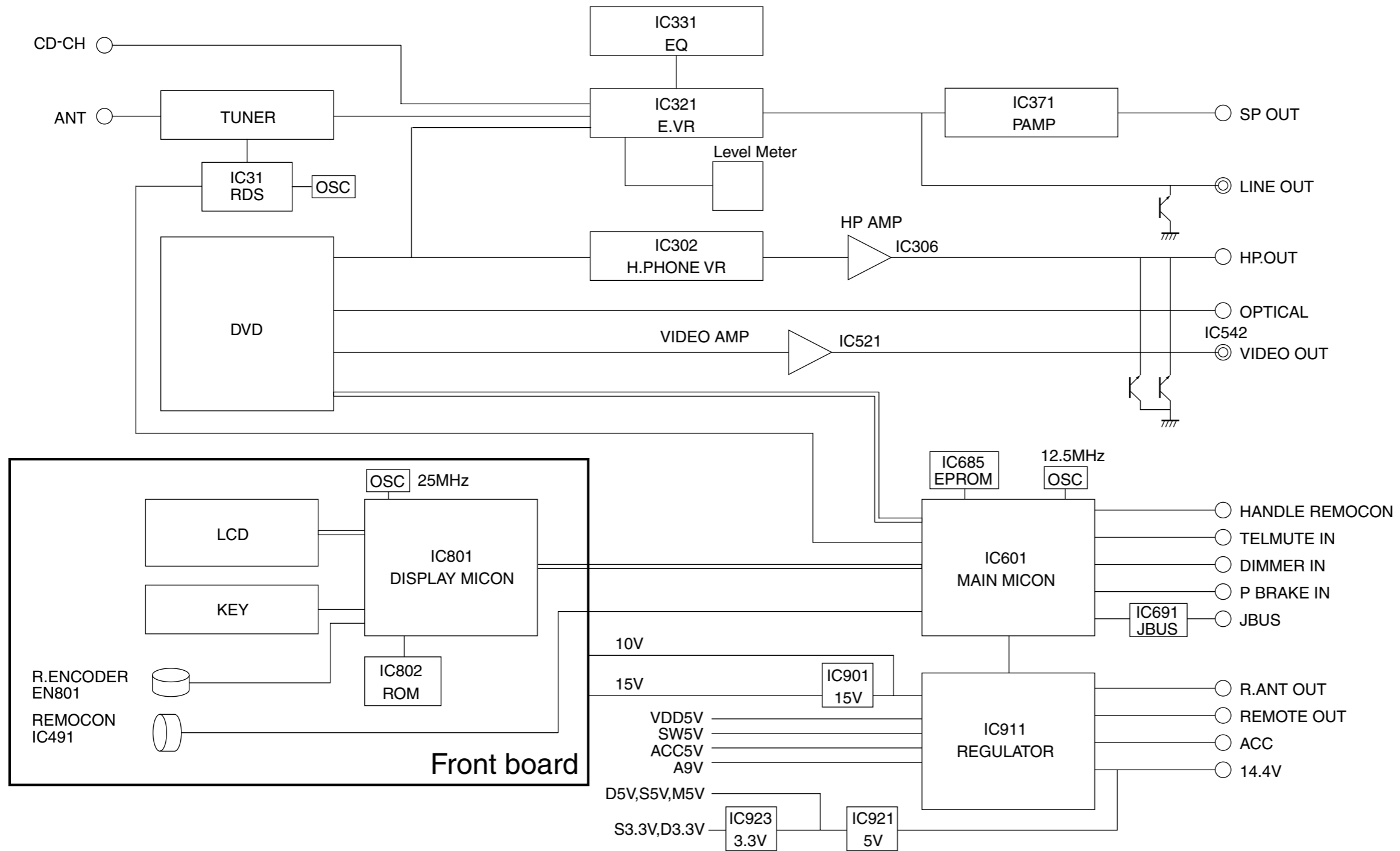
# Block diagram

## ■ DVD section



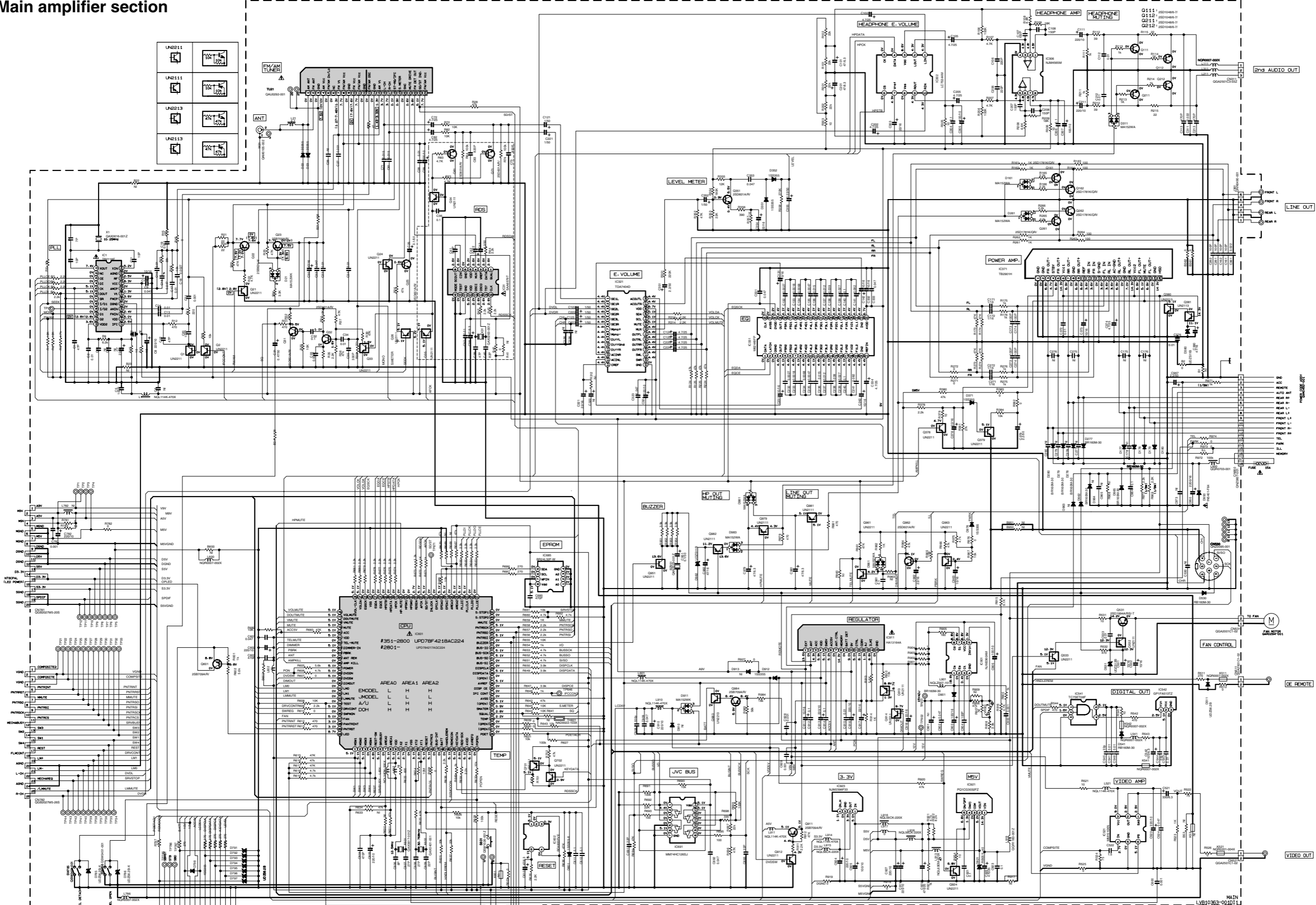
< MEMO >

■ System control & LCD / Key control section



# Standard schematic diagrams

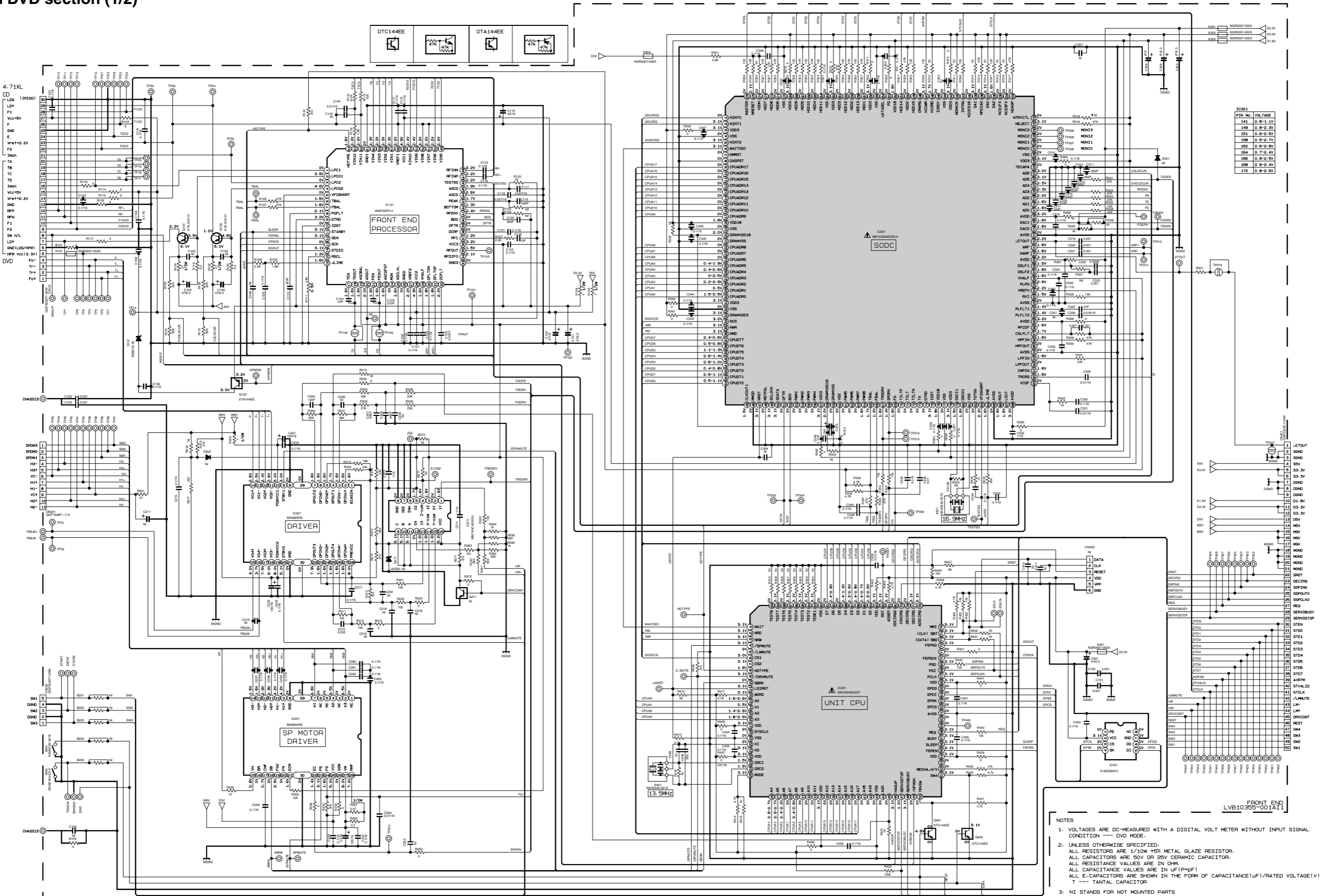
## Main amplifier section



NOTES  
 1. VOLTAGES ARE DC-MEASURED WITH A DIGITAL VOLT METER WITHOUT INPUT SIGNAL.  
 CONDITION : DVD MODE : ( ) FM MODE : □ AM MODE : ○  
 2. UNLESS OTHERWISE SPECIFIED,  
 ALL RESISTORS ARE 1/10W 40X METAL GLAZE RESISTOR.  
 ALL CAPACITORS ARE 50V OR 25V CERAMIC CAPACITOR.  
 ALL RESISTANCE VALUES ARE IN Ω.  
 ALL CAPACITANCE VALUES ARE IN μF (P=PF)  
 ALL CAPACITORS ARE SHOWN IN THE FORM OF CAPACITANCE(μF)/RATED VOLTAGE(V)  
 F = FILM CAPACITOR  
 3. NI STANDS FOR NOT MOUNTED PARTS

⚠ Parts are safety assurance parts.  
 When replacing those parts make sure to use the specified one.

DVD section (1/2)

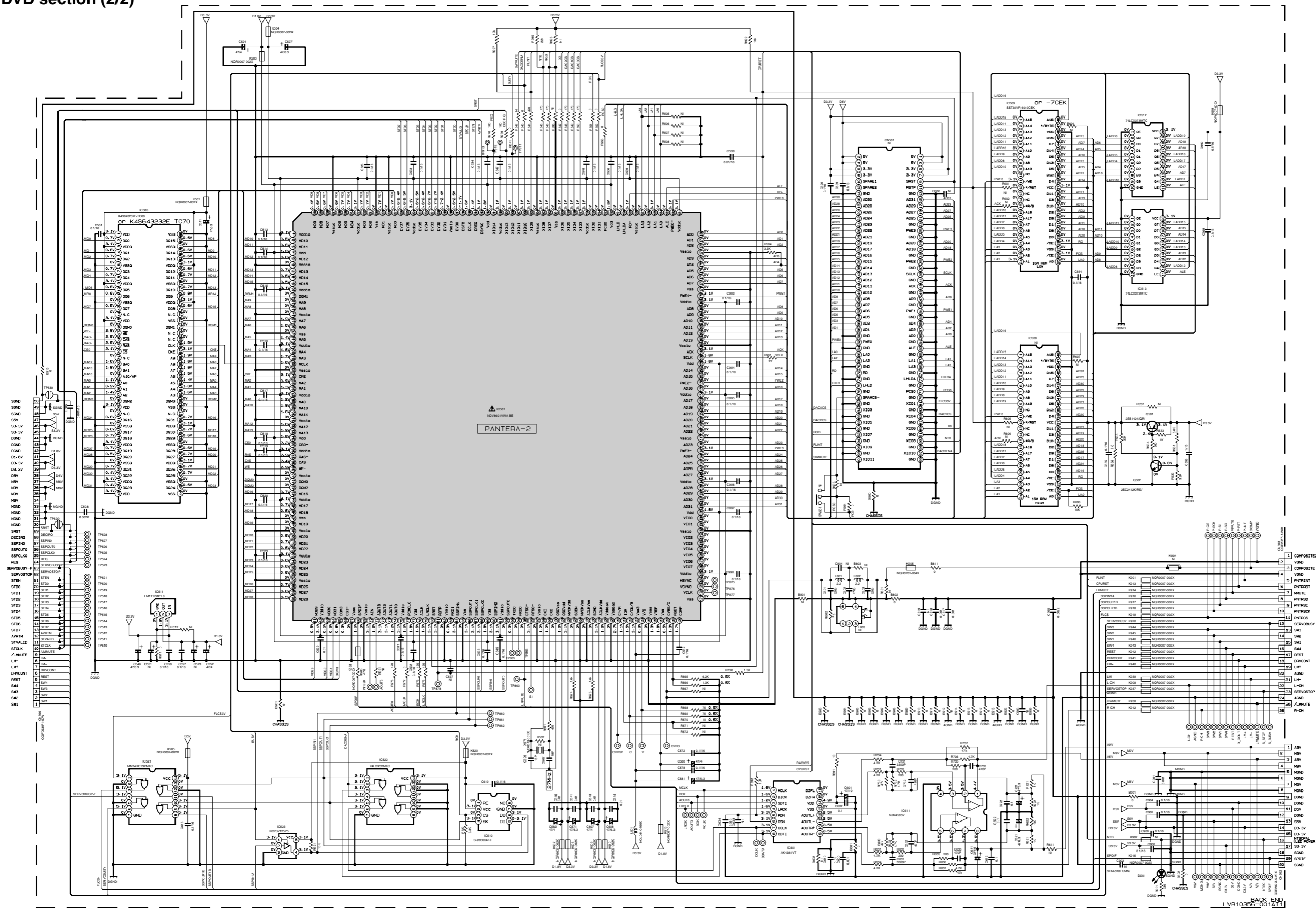


Pin No.	VOLTAGE
141	0.8-1.5V
149	0.8-2.3V
151	0.8-2.5V
158	0.8-2.7V
160	0.8-2.8V
164	0.7-2.4V
166	0.8-2.5V
168	0.8-2.4V
172	0.8-2.5V

- NOTES
- VOLTAGES ARE DC-MEASURED WITH A DIGITAL VOLT METER WITHOUT INPUT SIGNAL CONDITION --- DVD MODE.
  - UNLESS OTHERWISE SPECIFIED, ALL RESISTORS ARE 1/10W 45K METAL GLAZE RESISTOR. ALL CAPACITORS ARE 50V OR 25V CERAMIC CAPACITOR. ALL RESISTANCE VALUES ARE IN OHM. ALL CAPACITANCE VALUES ARE IN uF(P=pF) ALL E-CAPACITORS ARE SHOWN IN THE FORM OF CAPACITANCE(uF)/RATED VOLTAGE(V) T --- TANTALUM CAPACITOR
  - NI STANDS FOR NOT MOUNTED PARTS

Parts are safety assurance parts. When replacing those parts make sure to use the specified one.

DVD section (2/2)

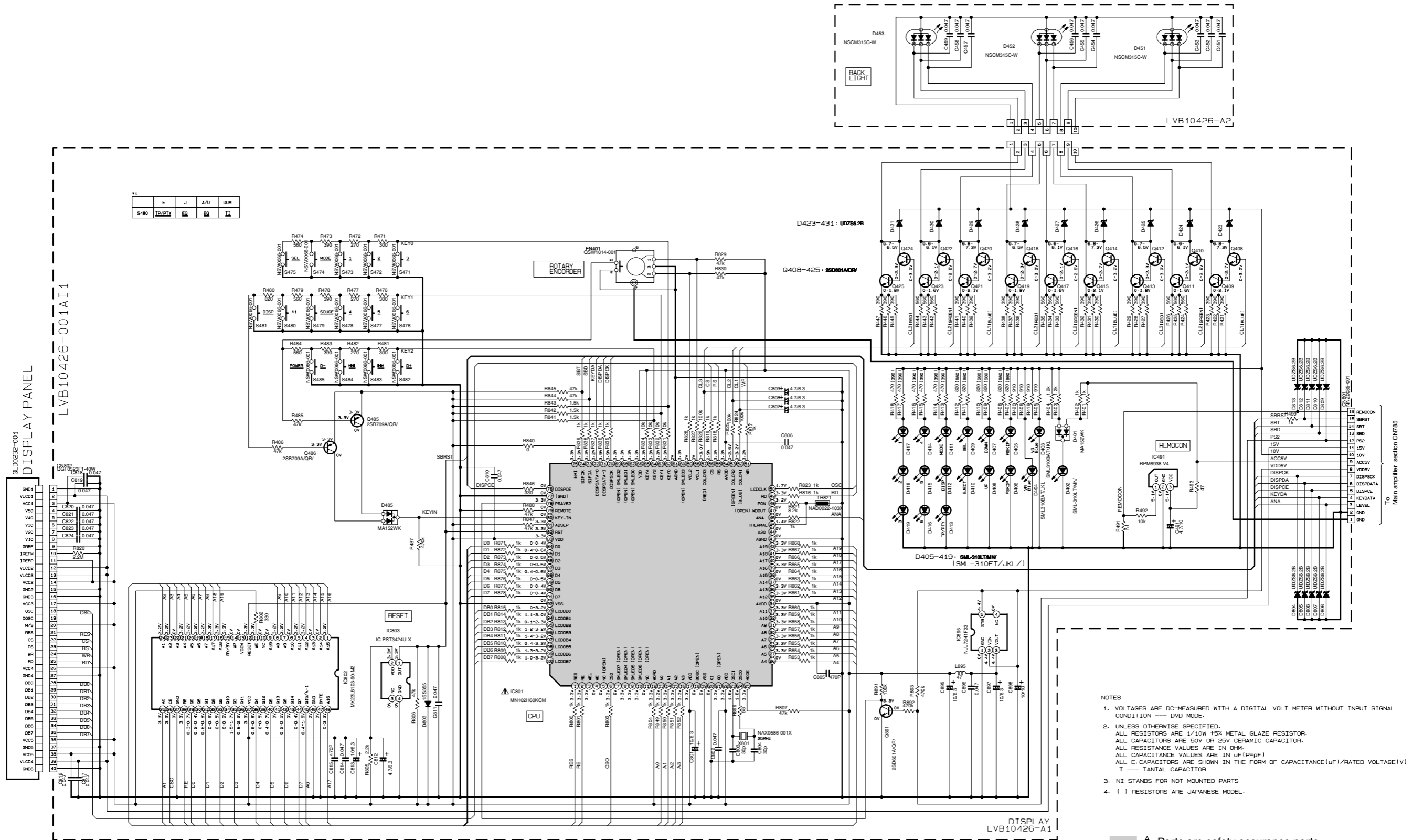


⚠ Parts are safety assurance parts.  
When replacing those parts make  
sure to use the specified one.

- NOTES
1. VOLTAGES ARE DC-MEASURED WITH A DIGITAL VOLT METER WITHOUT INPUT SIGNAL CONDITION -- DVD MODE.
  2. UNLESS OTHERWISE SPECIFIED:  
ALL RESISTORS ARE 1/4W 5% METAL GLAZE RESISTOR.  
ALL CAPACITORS ARE 50V OR 25V CERAMIC CAPACITOR.  
ALL RESISTANCE VALUES ARE IN OHM.  
ALL CAPACITANCE VALUES ARE IN UF(PpF)  
ALL CAPACITORS ARE SHOWN IN THE FORM OF CAPACITANCE(UF)/RATED VOLTAGE(V)  
T = TANTALUM CAPACITOR
  3. NI STANDS FOR NOT MOUNTED PARTS



■ LCD & key switch section



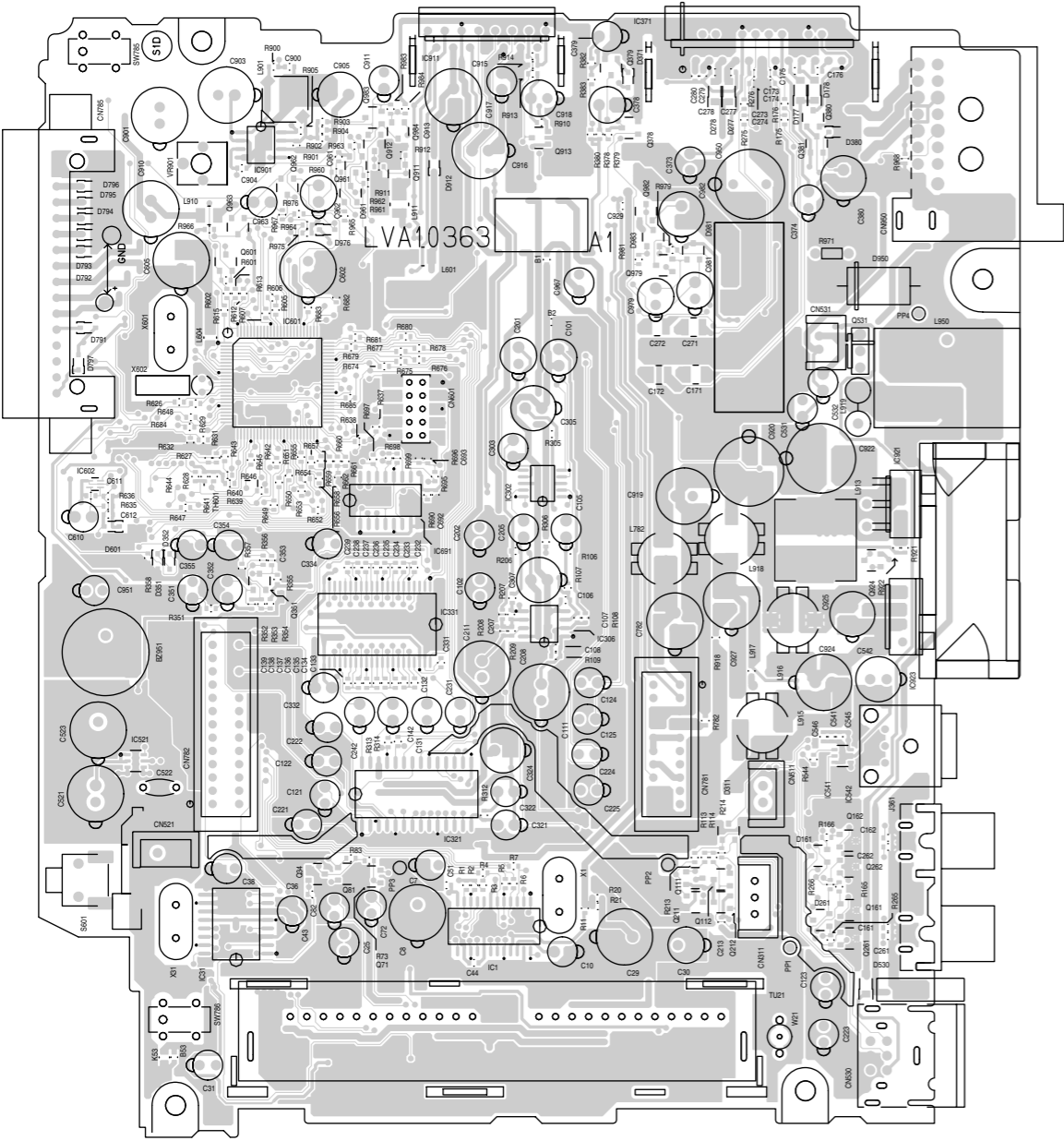
- NOTES
1. VOLTAGES ARE DC-MEASURED WITH A DIGITAL VOLT METER WITHOUT INPUT SIGNAL CONDITION --- DVD MODE.
  2. UNLESS OTHERWISE SPECIFIED, ALL RESISTORS ARE 1/10W ±5% METAL GLAZE RESISTOR. ALL CAPACITORS ARE 50V OR 25V CERAMIC CAPACITOR. ALL RESISTANCE VALUES ARE IN OHM. ALL CAPACITANCE VALUES ARE IN uF (P=pF). ALL E. CAPACITORS ARE SHOWN IN THE FORM OF CAPACITANCE(uF)/RATED VOLTAGE(V). T --- TANTALUM CAPACITOR
  3. NI STANDS FOR NOT MOUNTED PARTS
  4. ( ) RESISTORS ARE JAPANESE MODEL.

▲ Parts are safety assurance parts. When replacing those parts make sure to use the specified one.

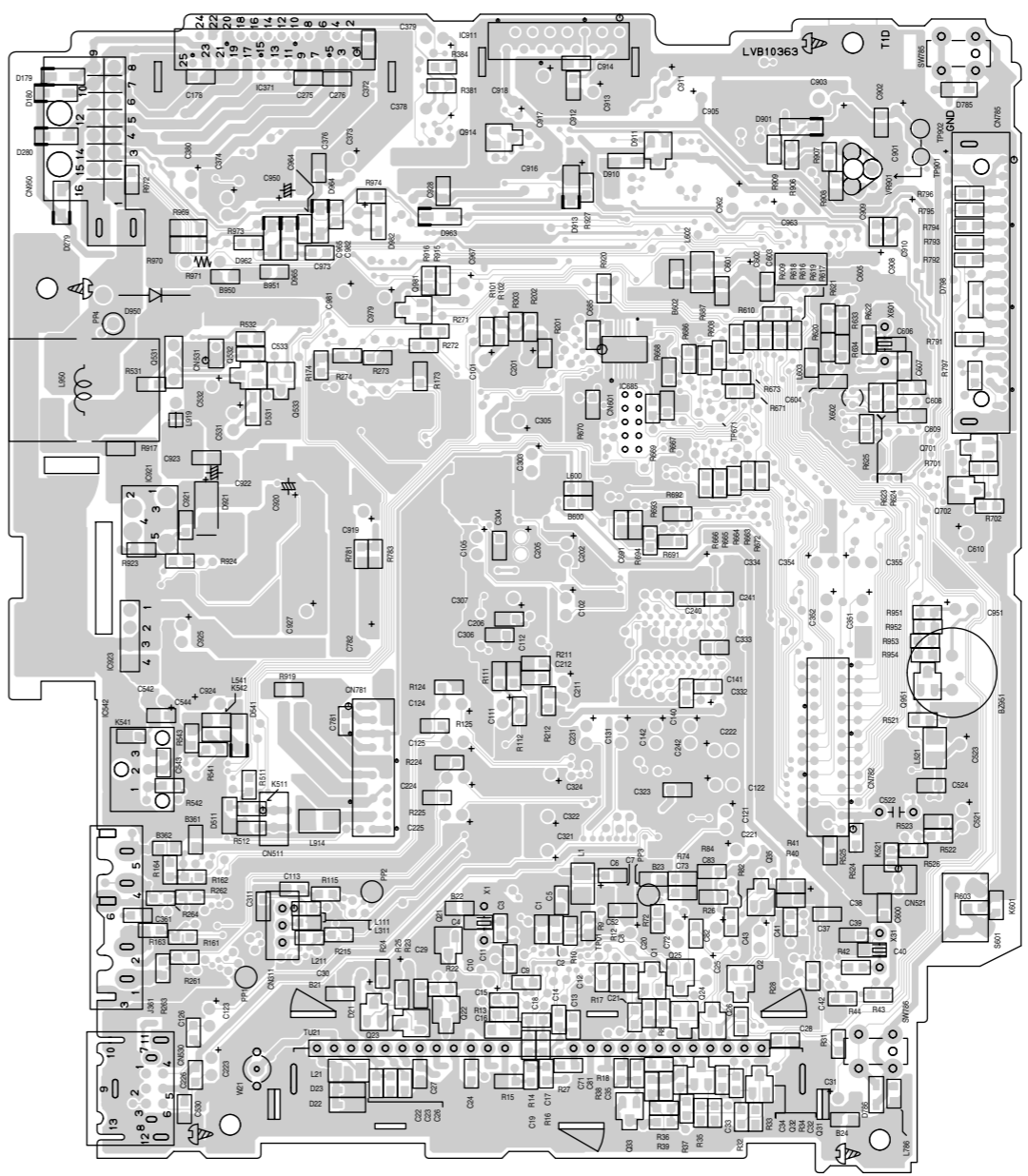
# Printed circuit board

## ■ Main board

Forward side

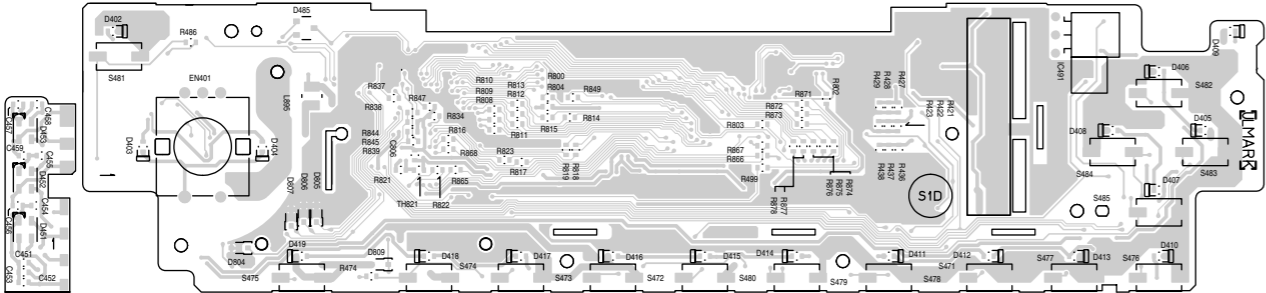


Reverse side

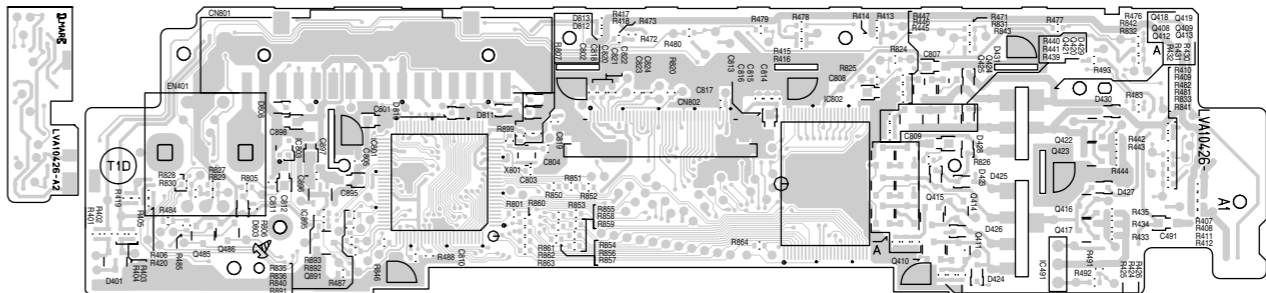


## ■ Front board

Forward side

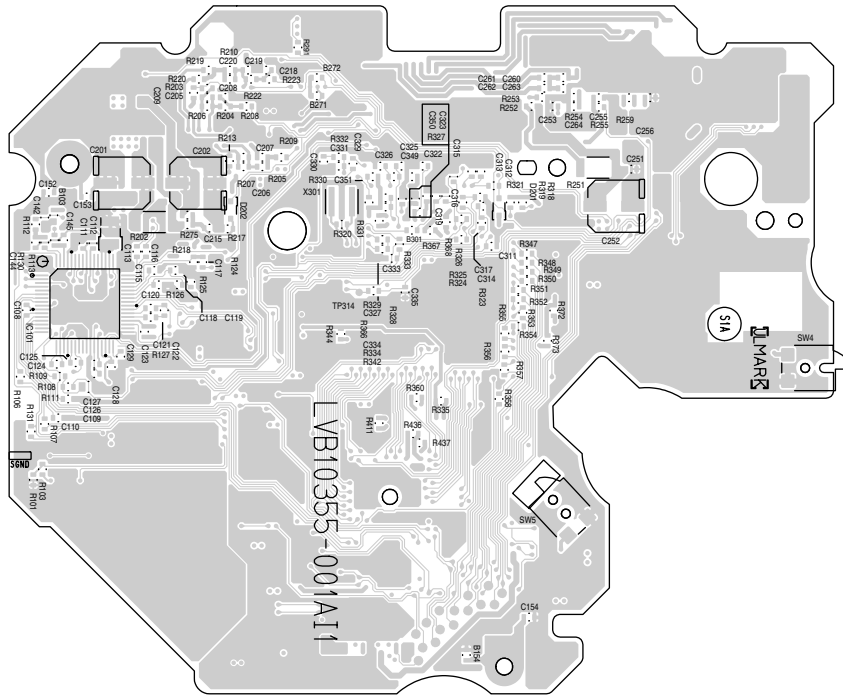


Reverse side

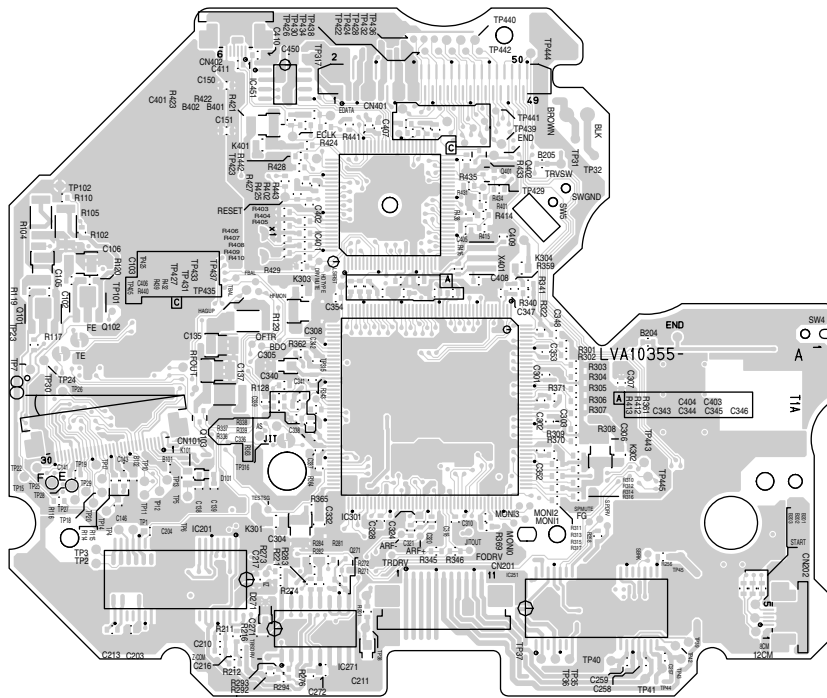


■ Front end board

Forward side

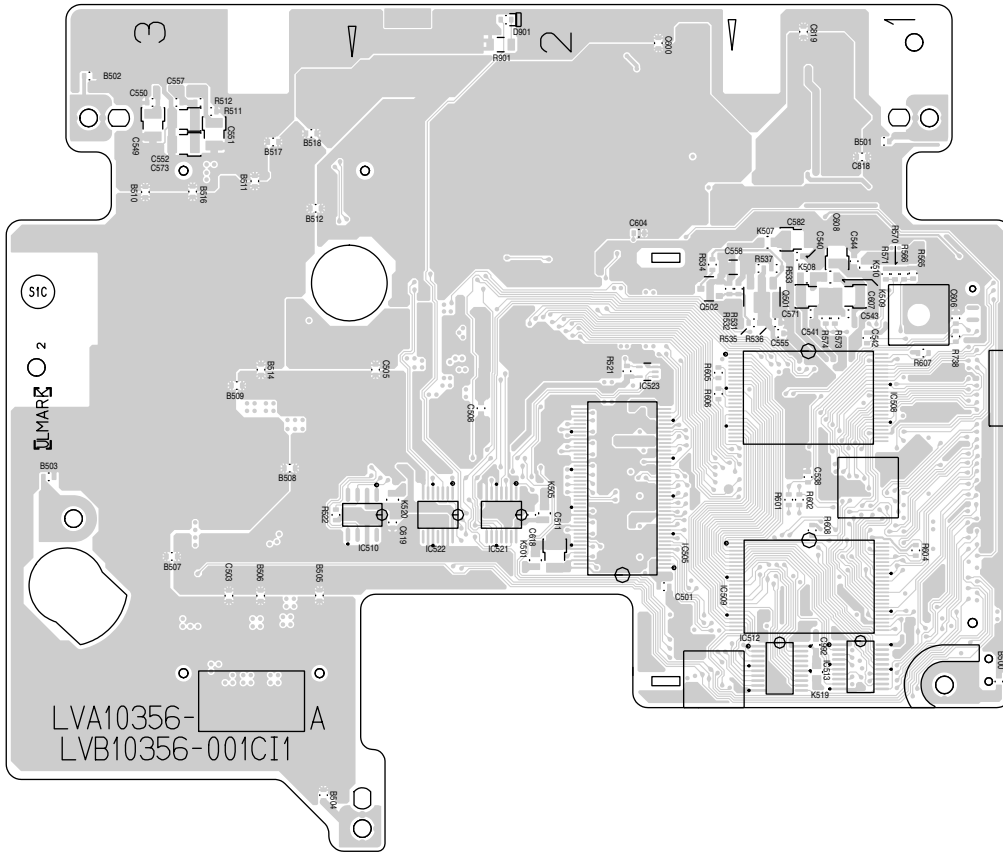


Reverse side

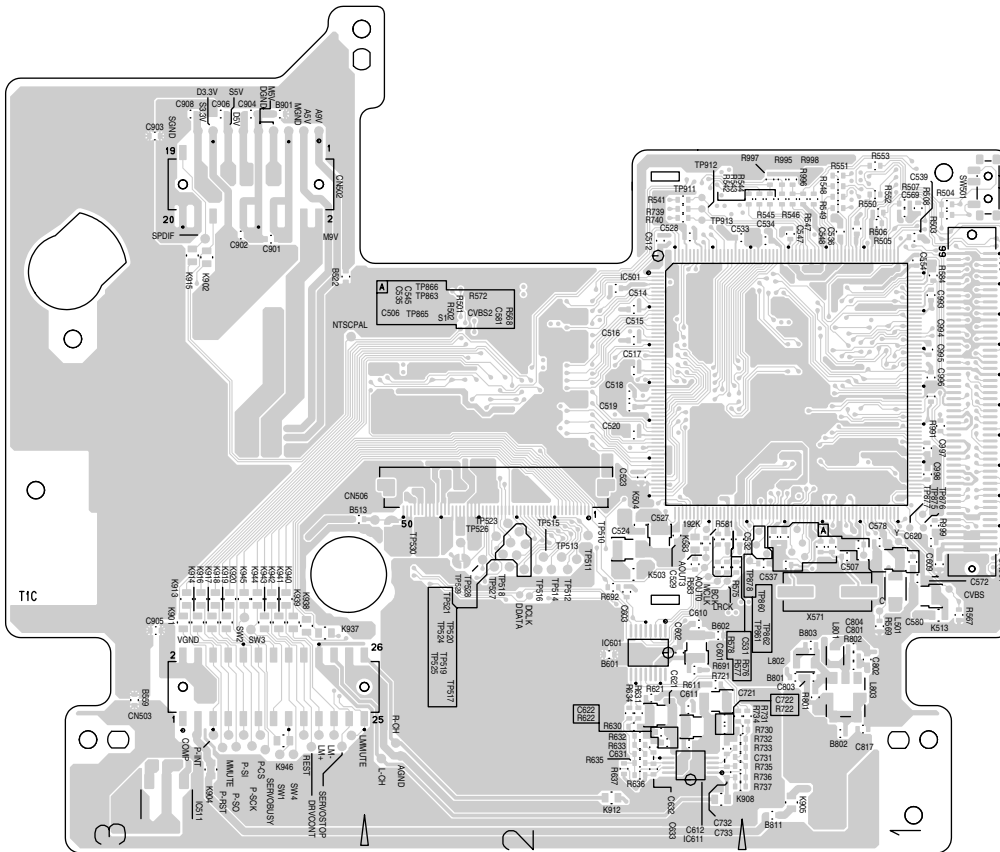


■ Back end board

Forward side



Reverse side



< MEMO >

**JVC**

**VICTOR COMPANY OF JAPAN, LIMITED**

AV & MULTIMEDIA COMPANY MOBILE ENTERTAINMENT CATEGORY 10-1,1chome,Ohwatari-machi,Maebashi-city,371-8543,Japan

(No.49879SCH)



Printed in Japan  
WPC